



PLOVPUT d.o.o.

trgovačko društvo s ograničenom odgovornošću za održavanje pomorskih plovnih putova i radijske službe

Obala Lazareta 1, HR-21000 SPLIT, tel: + 385 (0)21 390 600, faks: + 385 (0)21 390 630, e-mail: plovput@plovput.hr, web: www.plovput.hr

Uprava: tel: + 385 (0)21 390 601, faks: + 385 (0)21 390 690

Sektor sigurnosti plovidbe: tel: + 385 (0)21 490 707, faks: + 385 (0)21 490 712, e-mail: sigurnostplovidbe@plovput.hr

Sektor za održavanje - Baza: tel: + 385 (0)21 490 415, faks: + 385 (0)21 490 413, e-mail: održavanje@plovput.hr

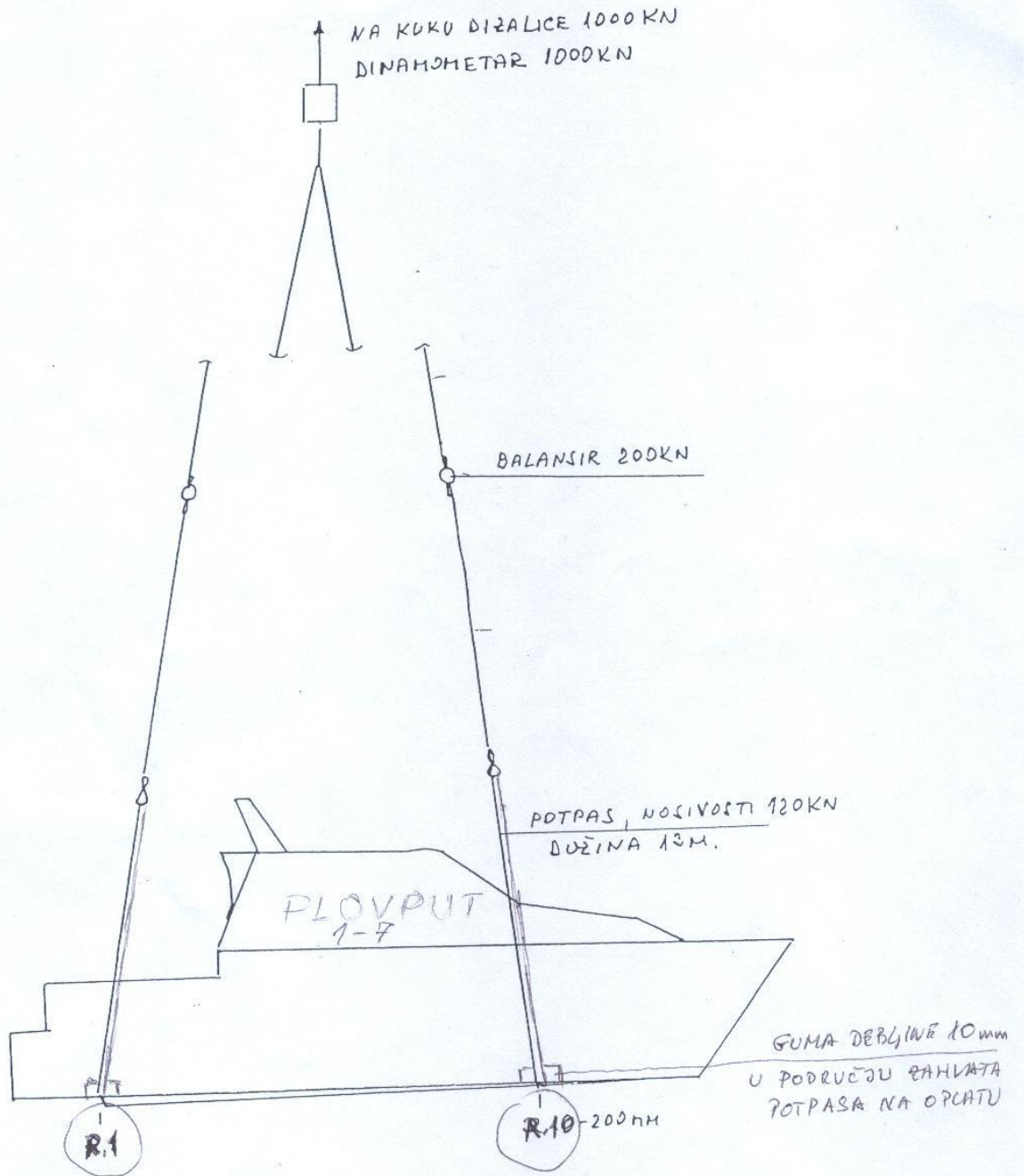
PRILOG D.

S A D R Ź A J:

- A. PLAN DIZANJA**
- B. PLAN KATODNE ZAŠTITE**
- C. PLAN POTKLADA**
- D. PLAN BOJANJA ZA AL. (HEMPEL)**
- E. IZJAVA O SUSTAVU PROTIV OBRASTANJA (HRB OBRAZAC)**

PLAN DIZANJA

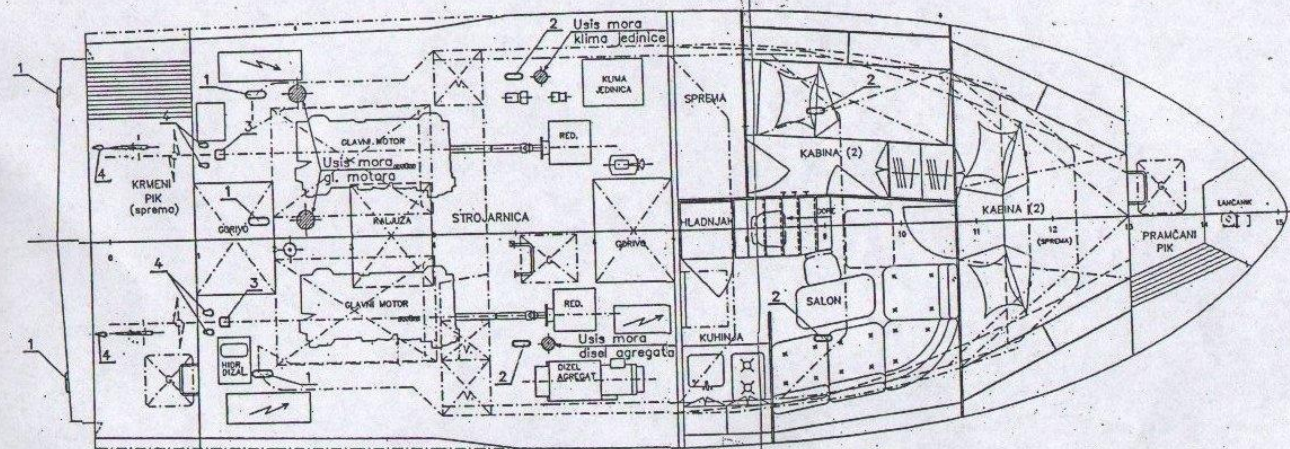
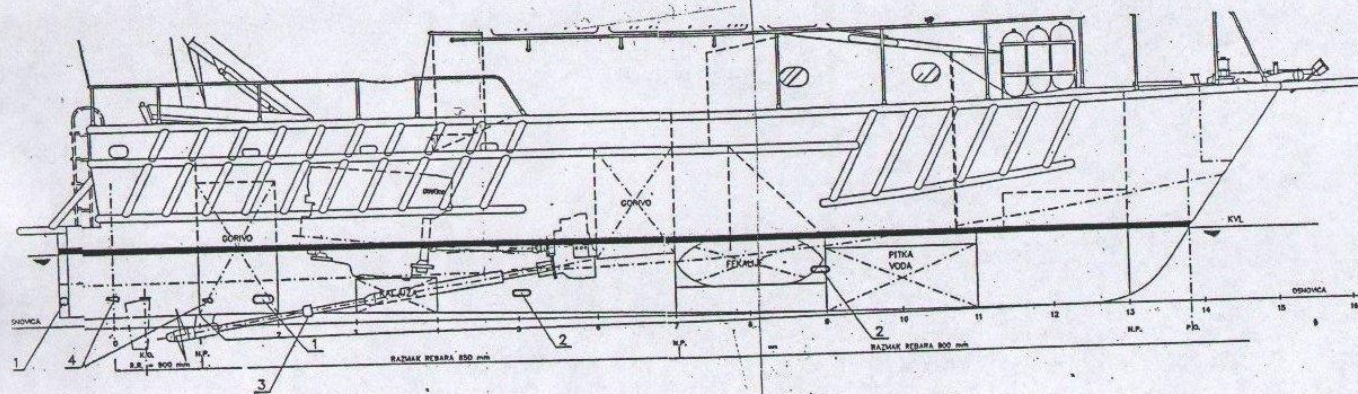
PRIHVAT NOV. 1993
DIZALICOM NOSIVOSTI 1000KN



TEŽINA PRAZNOG OPREMLJENOG BRODA:
 $G \approx 15,5 T$
(TEŽINA UKUPNA DO 20 T)

PLAN KATODNE ZAŠTITE

PLAN KATODNE ZAŠTITE




4	ALUMINIJSKA ANODA 120x40 mm	2x4	WA100A/1725	Al	0,22	EXALTO
3	PLETIVNA ANODA ZA OSOVINU ø60 mm	2		Al 10 Zn	-1,2	EXALTO
2	ALUMINIJSKA ANODA 180x60 mm	4	WA101A/1726	Al	0,44	EXALTO
1	ALUMINIJSKA ANODA 220x75 mm	5	WA102A/1727	Al	0,88	EXALTO
POZ.	NAZIV I IZM.JERE	KOM.	TIP/KAT.BR.	MATERIJAL	kg/kom	OPASKA

NAPOMENE:

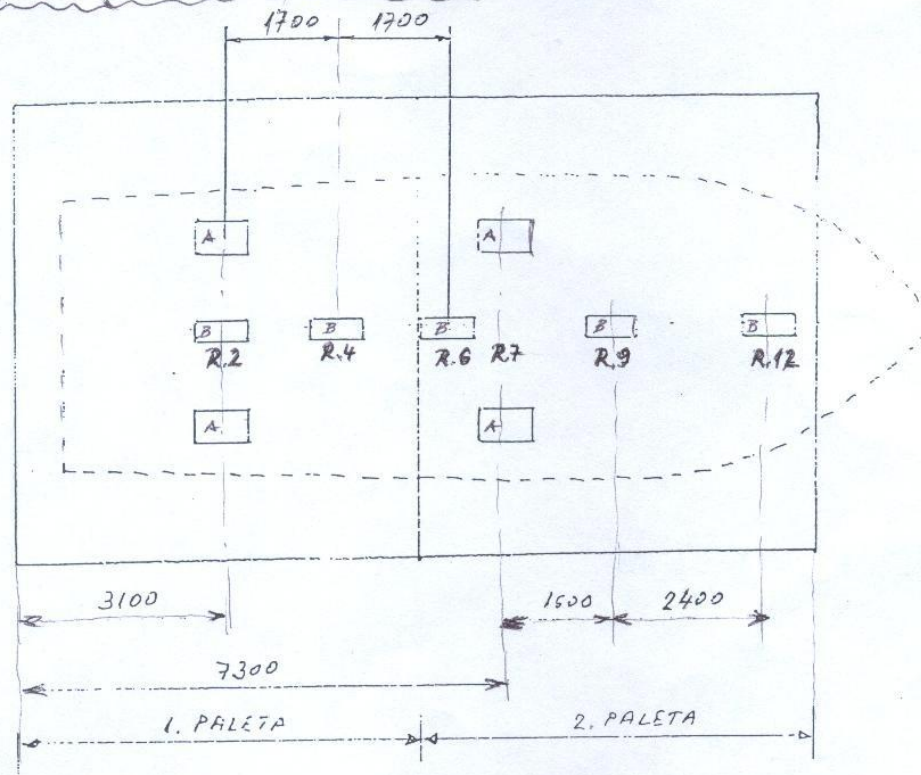
- Anode postaviti u smjeru strujanja, tj. uzdužno
- Anode na R.21-R.5 (poz. 1 i poz. 2) postaviti uzdužno iza usisa mora!
- Umetnuta traka za pričvršćenje anoda treba biti od aluminijske legure (ne čisti aluminij!).
- Poz. 3 montirati na osovinu između stativne cijevi i skroka ili između propelera i skroka. Vanjski promjer tokariti da ne remeti strujanje na propeler.
- Poz. 4: po dvije anode pored svakog skroka, a po jedra anoda iza lista kormila.
- Ažurirana je oprema specificirana u sastavici

G				
B				
A	DODANE ANODE POSREB SEEDKOVA I VOVI SMJEŠTA ANODA BODAVILA		IZM.JERE	OPREMA
OZNAKA	IZMJENE I DOPUNE		DNE	IME
DNE	IME	POTPIS	BRODOGRADILISTE SPECIJALNIH OBJEKATA "SPLIT" SPLIT, Hrvatska	
OSNOV.	06.1997.	D.Željko Dželić	Novogradnje: 596,597,598	
PRECL.	V.Bujanović	V.Željko	NAVTEC MARINE d.o.o.	
ODOBR.	B.Željko	B.Željko	Projektiranje, izvođenje i održavanje	

PLAN POTKLADA

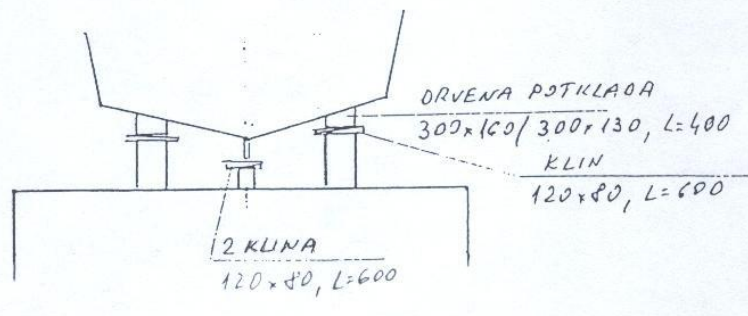
 BRODOSPLIT <small>PROJEKCIJSKI I PROMETNI ODLIČANJE, d.o.o.</small> Tehničko-tehnoško priprema C590	Projekt NOV:	NO. 593	List br. 3 AL2-135
	Nacr. br.:	m/6 "PLOVPUTA 7"	

PLAN (RASPORED) POTKLADA NA PALETAMA



- Ⓐ - BOČNE POTKLADJE 800x440, VISINE 710 MM.
- Ⓑ - CENTRALNE POTKLADJE 800x200, VISINE 300 MM.
- Ⓒ - NAKON POSTAVLJANJA BODIČICE NA POTKLADJE, DODATNO JE OSIGURATI VEŠOM, PREKO ŽITVI NA PRAMCU I KRMI ZA UJKE NA PALETI.

PRESJEK NA R.2 :





PLAN BOJANJA - održavanje Al-glisera tip *Plovput 1-7*

PLOVPUT d.o.o. - Split
(n/p: Ž.Jahoda)



POZICIJA BRODA	A.) SUSTAV BOJANJA AI - BRODA				
PODVODNI DIO	BROJ PREMAZA		BOJA - EPOKSI		
	POPRAVAK T/U (TOUCH-UP)	PUNI PREMAZ F/C (FULL COAT)	NAZIV BOJE	ŠIFRA NIJANSE	DEBLJ- INA (μ m)
	1 X		HEMPELS LIGHT PRIMER 45550	11630	100
	1 X		HEMPELS LIGHT PRIMER 45550	11630	100
	1 X	1 X 1 X	HEMPEL' S A/F MILLE DYNAMIC 71700	19990 30390	100 100
B.) RAZRJEDIVAČ	08450 (za LIGHT PRIMER) / 08080 (za A/F)				



POZICIJA BRODA	A.) SUSTAV BOJANJA AI - BRODA				
NADVODNI DIO (TOP SIDE)	BROJ PREMAZA		BOJA - EPOKSI		
	POPRAVAK T/U (TOUCH-UP)	PUNI PREMAZ F/C (FULL COAT)	NAZIV PROIZVODA	ŠIFRA NIJANSE	DEBLJ- INA (μ m)
	1 X		HEMPELS LIGHT PRIMER 45550	11630	100
	1 X		HEMPELS LIGHT PRIMER 45550	11630	100
1 X	1 X	HEMPATANE 55210 pakovanja 20 lit HEMPEL'S POLY ENAMEL 55100 pakovanja 0.75 lit	xxxx	40	
B.) RAZRJEĐIVAČ	08450 (za LIGHT PRIMER) / 08080 (za HEMPATHANE, POLY ENAMEL)				



KOLOR KARTA

HEMPEL Colors			
Enamels			
	10270 Grey	30700 Blue	
	10670 Grey	30840 Blue	
	11480 Grey	40100 Green	
	12170 Grey	40640 Green	
	13600 Grey	40730 Green	
	19000 Aluminium	40900 Green	
	19990 Black	40980 Green	
	20300 Yellow	50040 Orange	
	20320 Cream	50180 Orange	
	20380 Cream	50610 Red	
	20410 Cream	50630 Red	
	21210 Mast	50800 Red	
	21410 Yellow	53240 Orange	
	30100 Blue	60050 Teak	
		10000 White	
Primers			
	10500 Offwhite	40760 Green	
	11630 Offwhite	50246 Light red	
	12340 Grey	50410 Red	
	19820 Alu. bronze	50890 Red	
	19840 Grey (metal)	50900 Red	
	19870 Alu. grey	51320 Red	
	19880 Dark alu.	56880 Red	
	19910 Light alu.	60430 Brown	



Product Data

HEMPEL'S THINNERS 08...

HEMPEL PAINT is produced and supplied in such a way that thinning is normally not necessary provided the paint is properly mixed/stirred. However, if the paint is to be applied in a low film thickness (for instance as a "sealer coat") or if the paint has become too thick, e.g. in cold weather, the HEMPEL THINNER(s) indicated on the product data sheet may be added to obtain a consistency most suitable for application. As a general rule, thinning should be kept at a minimum as the quality of the paint work will suffer from too liberal thinning. However, if application is to take place at high temperatures (air and/or steel), thinning may even beyond the limits mentioned on the data sheets exceptionally be necessary in order to avoid dry-spray and poor film formation. HEMPEL'S THINNERS are blended to give the best results with regard to brushability, spray properties, etc. In some cases ordinary solvents may substitute. As such products are beyond our control, we disclaim any responsibility for the results. In each case the respective product data sheet and - when available - the APPLICATION INSTRUCTIONS should be consulted. As regards the use of THINNERS for cleaning of tools, see REMARKS overleaf.

HEMPEL'S THINNER NO.	FLASH POINT (Setaflash closed cup)	EXAMPLES OF GENERAL USE
08080	25°C/77°F	HEMPEL'S ANTIFOULINGS GLOBIC, OCEANIC and OLYMPIC HEMPALIN DECKPAINT 53240. HEMPAQUICK qualities All-purpose thinner for HEMPATEX qualities. HEMPATHANE topcoats and enamels.
08230	32°C/90°F	Thinner for HEMPALIN qualities (except HEMPALIN DECKPAINT 53240 and HEMPAQUICK qualities) and other alkyd-based products.
08450	23°C/73°F	General purpose thinner for HEMPADUR qualities.
08510	3°C/37°F HIGHLY FLAMMABLE	Special purpose thinner for HEMPATHANE ENAMEL 55100 HEMPATHANE TOPCOAT 55210
08570	4°C/39°F	HEMPEL'S SHOPPRIMER E 15280 HEMPEL'S SHOPPRIMER ZS 15722 HEMPEL'S SHOPPRIMER ZS 15890



Product Data

HEMPEL'S LIGHT PRIMER 45551

CURING AGENT 95360

Description: HEMPEL'S LIGHT PRIMER 45551 is a two-component polyamide adduct cured epoxy high build paint. It forms a hard and tough coating resistant to water and petroleum products.

Recommended use: As a primer under and above the water line on boats made of aluminium, glass fibre reinforced polyester, plywood, steel and ferro-cement. Also for prevention and repair of osmotic blistering in the glass fibre reinforced polyester, and for protection of keels and rudders.

Availability: Subject to confirmation.

PHYSICAL CONSTANTS:

Colours/Shade nos:	Off-white/11630	Grey/12170
Finish:	Flat	Flat
Volume solids, %:	52 ± 1	51 ± 1
Theoretical spreading rate:	5.2 m ² /litre - 100 micron 209 sq.ft./US gallon - 4 mils	5.1 m ² /litre - 100 micron 205 sq.ft./US gallon - 4 mils
Flash point:	25°C/77°F	25°C/77°F
Specific gravity:	1.3 kg/litre - 10.9 lbs/US gallon	1.3 kg/litre - 10.9 lbs/US gallon
Dry to touch:	3-4 hours at 20°C/68°F 6-8 hours at 10°C/50°F	3-4 hours at 20°C/68°F 6-8 hours at 10°C/50°F
Fully cured:	7 days at 20°C/68°F 14 days at 10°C/50°F	7 days at 20°C/68°F 14 days at 10°C/50°F
V.O.C.:	445 g/litre - 3.7 lbs/US gallon	450 g/litre - 3.7 lbs/US gallon

The physical constants stated are nominal data according to the HEMPEL Group's approved formulas. They are subject to normal manufacturing tolerances and where stated, being standard deviation according to ISO 3534-1. Further reference is made to "Explanatory Notes" in the HEMPEL Book.

APPLICATION DETAILS:

Mixing ratio for 45551:	Base 45559 : Curing agent 95360 2 : 1 by volume	
Application method.:	Airless spray	Brush/Roller
Thinner:	08450 (5%)	08450 (5%)
Pot life:	2 hours (20°C/68°F)	6 hours (20°C/68°F)
Nozzle orifice:	.019"-.023"	
Nozzle pressure:	175 bar/2450 psi <i>(Airless spray data are indicative and subject to adjustment)</i>	
Cleaning of tools:	HEMPEL'S THINNER 08450, HEMPEL'S DEGREASER 99611	
Indicated film thickness, dry:	100 micron/4 mils	
Indicated film thickness, wet:	200 micron/8 mils	
Recoat interval min:	See separate APPLICATION INSTRUCTIONS	
Recoat interval max:	See separate APPLICATION INSTRUCTIONS	

Safety: Handle with care. Before and during use, observe all safety labels on packaging and paint containers, consult HEMPEL Material Safety Data Sheets and follow all local or national safety regulations. Avoid inhalation, avoid contact with skin and eyes, and do not swallow. Take precautions against possible risks of fire or explosions as well as protection of the environment. Apply only in well ventilated areas.

Issued: April 2003



Product Data

HEMPATHANE® ENAMEL 55100

BASE 55109 with CURING AGENT 95370

Description: HEMPETHANE ENAMEL 55100 is a two-component, high-gloss acrylic polyurethane enamel with good gloss and colour retention.

Recommended use: As a glossy decorative finishing coat on a variety of substrates such as steel, aluminium, glassfibre, reinforced polyester, plywood, hardwood etc. in severely corrosive atmospheric environment.
Minimum temperature for curing is -10°C/14°F.

Service temperatures: Maximum, dry: 120°C/248°F (see REMARKS overleaf).

Availability: Part of Group Assortment. Local availability subject to confirmation.

PHYSICAL CONSTANTS:

Colours/Shade nos: White/10000*
 Finish: High-gloss
 Volume solids, %: 52 ± 1
 Theoretical spreading rate: 14.9 m²/litre - 35 micron
 596 sq.ft./US gallon - 1.4 mil
 Flash point: 31°C/88°F
 Specific Gravity: 1.3 kg/litre - 10.8 lbs/US gallon
 Surface dry: 2½ (approx.) hrs at 20°C/68°F (ISO 1517)
 Dry to touch: 4-5 hours at 20°C/68°F
 Fully cured: 7 days at 20°C/68°F
 V.O.C.: 440 g/litre - 3.7 lbs/US gallon

*Other shades according to assortment list.

The physical constants stated are nominal data according to the HEMPEL Group's approved formulas. They are subject to normal manufacturing tolerances and where stated, being standard deviation according to ISO 3534-1. Further reference is made to "Explanatory Notes" in the HEMPEL Book.

APPLICATION DETAILS:

Mixing ratio for 55100: Base 55109 : Curing agent 95370
 7 : 1 by volume

Application method:	Airless spray	Air spray	Brush
Thinner (max.vol.):	See REMARKS overleaf	See REMARKS overleaf	08080 (5%)
Pot life:	2 hours (20°C/68°F)		
Nozzle orifice:	.017"-.019"		
Nozzle pressure:	75-100 bar /1100 -1450 psi (Airless spray data are indicative and subject to adjustment)		
Cleaning of tools:	THINNER 08080 or 08510		
Indicated film thickness, dry:	35 micron/1.4 mil		
Indicated film thickness, wet:	75 micron/3 mils		
Recoat interval, min:	8 hours (20°C/68°F)		
Recoat interval, max:	See REMARKS overleaf		

Safety: Handle with care. Before and during use, observe all safety labels on packaging and paint containers, consult HEMPEL Material Safety Data Sheets and follow all local or national safety regulations. Avoid inhalation, avoid contact with skin and eyes, and do not swallow. Take precautions against possible risks of fire or explosions as well as protection of the environment. Apply only in well ventilated areas.

Issued: April 2003



Product Data

HEMPATHANE® TOPCOAT 55210

BASE 55219 with CURING AGENT 95370

Description:	HEMPATHANE TOPCOAT 55210 is a two-component, semi-gloss acrylic polyurethane coating with good gloss and colour retention.
Recommended use:	As a finishing coat for protection of structural steel in severely corrosive atmospheric environment, where light-fastness and gloss retention are required. Minimum temperature for curing is -10°C/14°F.
Service temperatures:	Maximum, dry: 120°C/248°F (see REMARKS overleaf).
Certificates/Approvals:	Approved as a low flame spread material by German and Italian authorities according to IMO resolution MSC 61 (67). Has a German EC-type Examination Certificate.
Availability:	Part of Group Assortment. Local availability subject to confirmation.

PHYSICAL CONSTANTS:

Colours/Shade nos:	White/10000*	Blue/30840*
Finish:	Semi-gloss	Semi-gloss
Volume solids, %:	52 ± 1	51 ± 1
Theoretical spreading rate:	10.4 m ² /litre - 50 micron 41.7 sq.ft./US gallon - 2 mils	10.2 m ² /litre - 50 micron 40.9 sq.ft./US gallon - 2 mils
Flash point:	33°C/92°F	33°C/92°F
Specific gravity:	1.2 kg/litre - 10.0 lbs/US gallon	1.1 kg/litre - 9.2 lbs/US gallon
Surface dry:	2½ (approx.) hrs at 20°C/68°F (ISO 1517)	2½ (approx.) hrs at 20°C/68°F (ISO 1517)
Dry to touch:	8 (approx.) hours at 20°C/68°F	8 (approx.) hours at 20°C/68°F
Fully cured:	7 days at 20°C/68°F	7 days at 20°C/68°F
V.O.C.:	440 g/litre - 3.7 lbs/US gallon	450 g/litre - 3.7 lbs/US gallon

*Other shades according to assortment list.

The physical constants stated are nominal data according to the HEMPEL Group's approved formulas. They are subject to normal manufacturing tolerances and where stated, being standard deviation according to ISO 3534-1. Further reference is made to "Explanatory Notes" in the HEMPEL Book.

APPLICATION DETAILS:

Mixing ratio for 55210:	Base 55219 : Curing agent 95370 7 : 1 by volume	
Application method:	Airless spray	Brush
Thinner (max. vol.):	See REMARKS overleaf	08080 (5%)
Pot life:	4 hours (20°C/68°F)	
Nozzle orifice:	.017"-.019"	
Nozzle pressure:	150 bar/2200 psi (Airless spray data are indicative and subject to adjustment)	
Cleaning of tools:	THINNER 08080 or 08510	
Indicated film thickness, dry:	50 micron/2 mils (See REMARKS overleaf)	
Indicated film thickness, wet:	100 micron/4 mils	
Recoat interval, min:	See REMARKS overleaf	
Recoat interval, max:	See REMARKS overleaf	

Safety:	Handle with care. Before and during use, observe all safety labels on packaging and paint containers, consult HEMPEL Material Safety Data Sheets and follow all local or national safety regulations. Avoid inhalation, avoid contact with skin and eyes, and do not swallow. Take precautions against possible risks of fire or explosions as well as protection of the environment. Apply only in well ventilated areas.
----------------	--

Issued: April 2003



Product Data

HEMPEL'S MILLE® DYNAMIC 71700

Description: HEMPEL'S MILLE DYNAMIC 71700 is a polishing antifouling containing a combination of cuprous compounds and organic, bioactive materials. Due to its self-renewing effect this product maintains an effective bioactive surface during its entire service life. Service has a certain influence on colour. The antifouling will change to its intended final shade after approximately one week in water and may obtain a copper-green tinge.

Recommended use: As an antifouling for boats of glass fibre, wood, plywood, steel and ferro-cement. Do not use on aluminium or other light-alloy metal. Risk of corrosion in case of direct contact.

Availability: Subject to confirmation.

PHYSICAL CONSTANTS:

Colours/Shade nos:	Light-grey/10160*	Red/51170*
Finish:	Semi-flat	Semi-flat
Volume solids, %:	56 ± 1	60 ± 1
Theoretical spreading rate:	14.0 m ² /litre - 40 micron 561 sq.ft./US gallon - 1.6 mils	15.0 m ² /litre - 40 micron 602 sq.ft./US gallon - 1.6 mils
Flash point:	25°C/77°F	25°C/77°F
Specific gravity:	1.8 kg/litre - 15.0 lbs/US gallon	1.9 kg/litre - 15.8 lbs/US gallon
Dry to touch:	4 (app) hours at 20°C/68°F 8 (app) hours at 10°C/50°F	4 (app) hours at 20°C/68°F 8 (app) hours at 10°C/50°F
V.O.C.:	390 g/litre - 3.2 US/gallon	355 g/litre - 2.9 lbs/US gallon

*Other shades according to assortment list.

The physical constants stated are nominal data according to the HEMPEL Group's approved formulas. They are subject to normal manufacturing tolerances and where stated, being standard deviation according to ISO 3534-1. Further reference is made to "Explanatory Notes" in the HEMPEL Book.

APPLICATION DETAILS:

Application method:	Airless spray	Air spray	Brush/Roller/Paint pad
Thinner (max.vol.):	08080 (5%)	08080 (15%)	08080 (5%)
Nozzle orifice:	.018"-.023"		
Nozzle pressure:	150 bar/2175 psi (Airless spray data are indicative and subject to adjustment)		
Cleaning of tools:	HEMPEL'S THINNER 08080		
Indicated film thickness, dry:	40 micron/1.6 mils (See REMARKS overleaf)		
Indicated film thickness, wet:	75 micron/3 mils		
Recoat interval, min:	5 hours (20°C/68°F) 9 hours (10°C/50°F)		
Recoat interval, max:	None (See REMARKS overleaf)		

Safety: Handle with care. Before and during use, observe all safety labels on packaging and paint containers, consult HEMPEL Material Safety Data Sheets and follow all local or national safety regulations. Avoid inhalation, avoid contact with skin and eyes, and do not swallow. Take precautions against possible risks of fire or explosions as well as protection of the environment. Apply only in well ventilated areas.

Issued: April 2003

IZJAVA O SUSTAVU PROTIV OBRASTANJA

Sastavljena u skladu s
Medunarodnom konvencijom o nadzoru štetnih sustava protiv obrastanja na brodovima, 2001

Ime broda	Broj ili znak raspoznavanja	Luka upisa	Duljina (m)	Bruto tonaža	IMO broj (ako je primjenjivo)

Potvrđujem da sustav obrastanja primijenjen na brodu udovoljava zahtjevima Dodatka I, Konvencije

.....
(Datum)

.....
(Potpis vlasnika ili od vlasnika ovlaštene osobe)

Potvrđivanje primijenjenog sustava protiv obrastanja

Vrste i datumi primjene sustava protiv obrastanja:

.....
(Datum)

.....
(Potpis vlasnika ili od vlasnika ovlaštene osobe)

Vrste i datumi primjene sustava protiv obrastanja:

.....
(Datum)

.....
(Potpis vlasnika ili od vlasnika ovlaštene osobe)

Vrste i datumi primjene sustava protiv obrastanja:

.....
(Datum)

.....
(Potpis vlasnika ili od vlasnika ovlaštene osobe)